

Palos Verdes Peninsula Land Conservancy



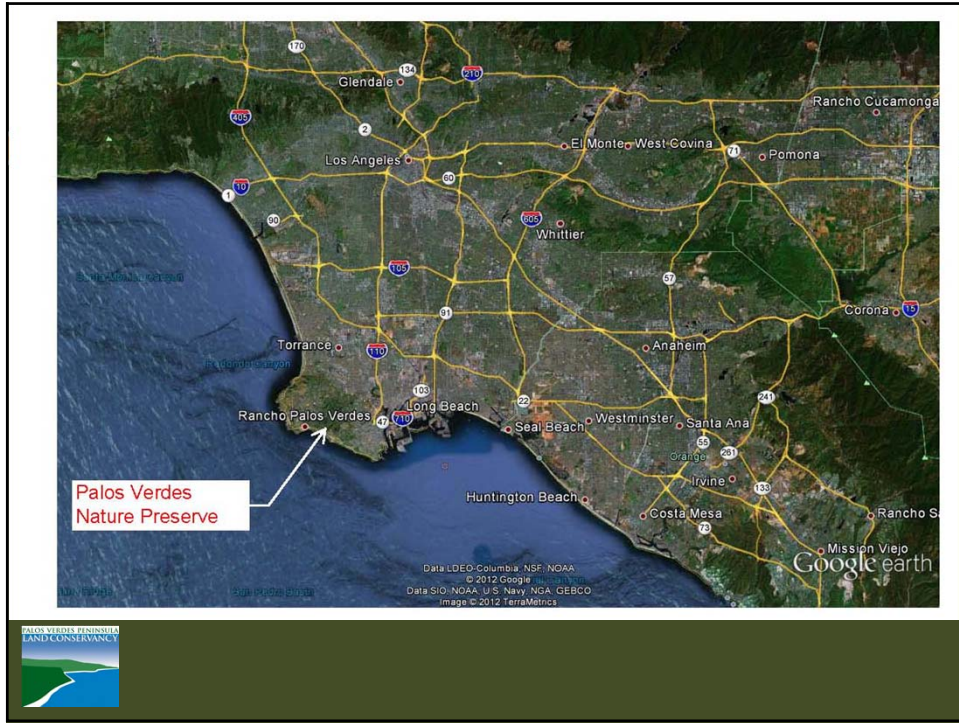
*Preserving land and restoring
habitat for the education and
enjoyment of all.*

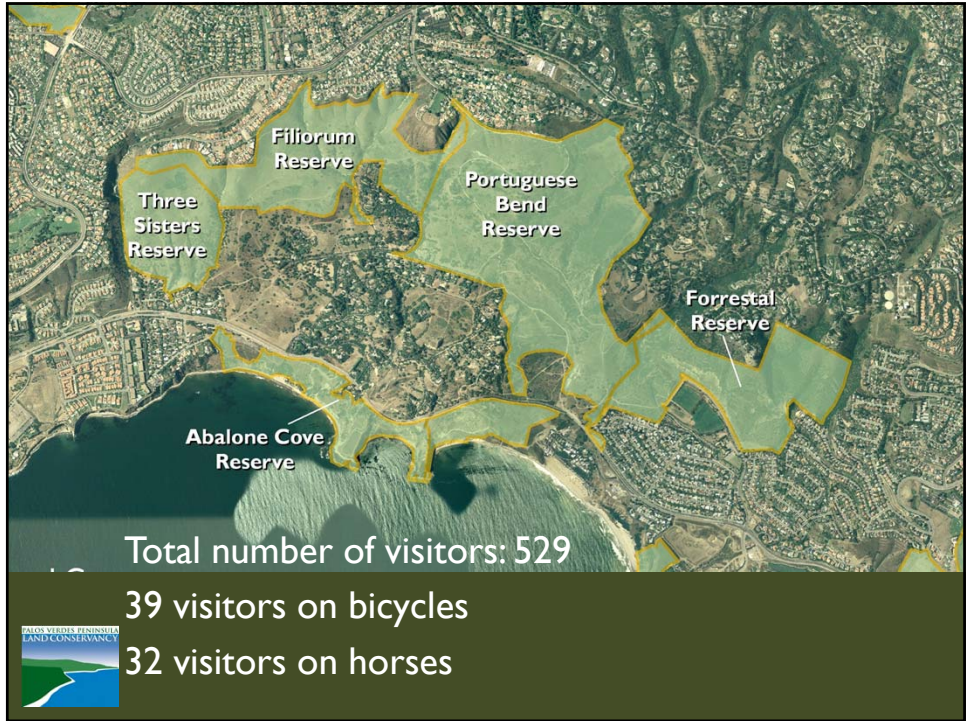


Palos Verdes Peninsula Land Conservancy

- Acquire land for preservation in perpetuity
- Maintain or increase the habitat value
- Make preserved land available for public use (over 44 miles of trails)







Coastal California Gnatcatcher

Poliptila californica californica

- Federally listed as Threatened
- Endangered due to loss of habitat
- Requires mature coastal sage scrub > 3 feet



Coastal Cactus Wren *Campylorhynchus brunneicapillus*



- State Species of Special Concern

- Requires mature cactus > 1 m tall for nesting



El Segundo Blue Butterfly *Euphilotes battoides allyni*

- Federally listed as Endangered
- Host plant: dune buckwheat (*Eriogonum parvifolium*)
- Entire life cycle dependent on buckwheat (egg, larvae, pupae, and adult)
- Larvae feed on flowers and seeds



Science Based Habitat Restoration

- 100+ acres restored
- Restore 5 acres/per year



City of Rancho Palos Verdes Preserve Trails Plan

- Committee was formed to provide recommendations for naming of the Preserve & forming a Preserve Trails Plan
- The Preserve Trails Plan for the Portuguese Bend Reserve was approved in 2008



Filiorum Reserve Trails Plan

- ❑ Purchased with the help of the community, City of Rancho Palos Verdes and State of California Coastal Conservancy Prop 84 Grant Funds
- ❑ Contains existing social trails, valuable habitat
- ❑ Provides for contiguous open space of 950 acres



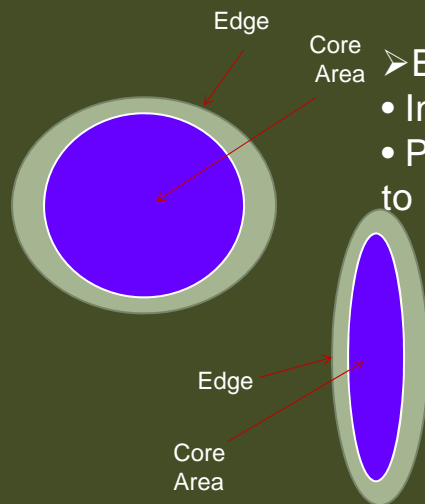
Value of Large Reserves

- ❑ Large reserves provide the greatest protection and support the largest populations.



Habitat fragmentation

➤ Barrier to wildlife dispersal



➤ Edge effects:

- Invasive weeds spread
- Predators have easier access to nests

Input to Trail Considerations

- Trail considerations were formulated based on:
 - *State Coastal Conservancy Deed Restrictions*
 - *Filiorium Conservation Easement*
 - *The Draft Rancho Palos Verdes NCCP*
 - *City of Rancho Palos Verdes Municipal Code*



Conservation Easement

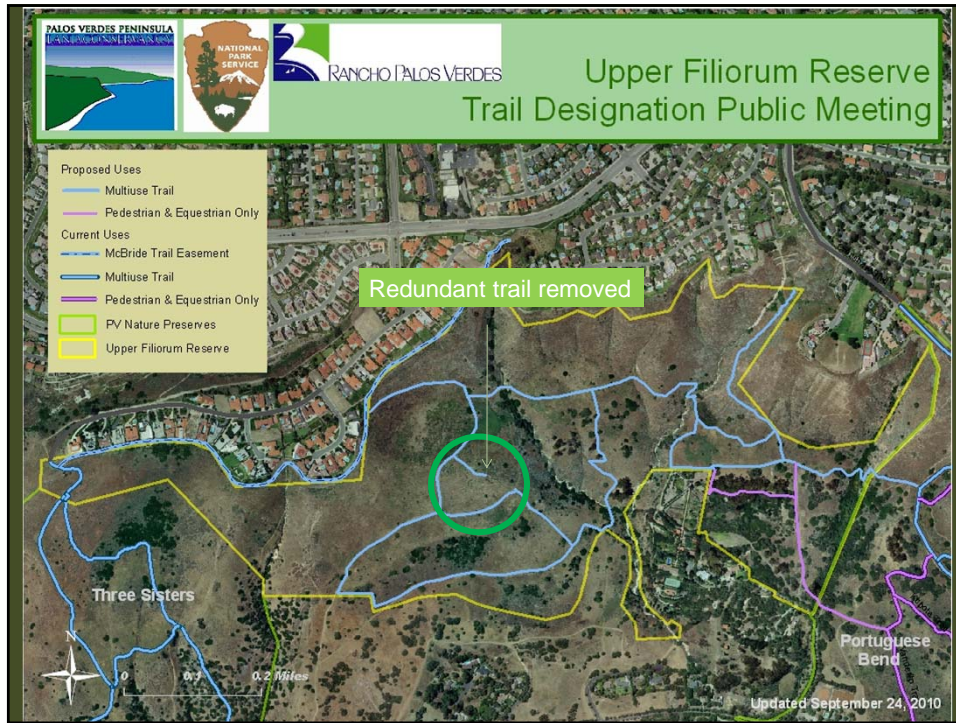
- Possess wildlife and habitat values
- Primary purpose is preserve land in its natural, scenic, and open space condition
- Under the Jurisdiction of the CA Dept. of Fish and Wildlife



Draft NCCP

- Avoid or minimize impacts to Coastal Sage Scrub habitat
- Locate trails away from sensitive habitat
- Limit public use to specified trails where impacts to habitat can be minimized





Matterhorn

- Steep Trail is “unsustainable”
- Surrounding habitat is undisturbed
- Opportunity to create large block of habitat without fragmentation
- Rerouting with switchbacks causes too much impact to habitat





Ishibashi trail

The top map is a detailed view of the Upper Filiorum Reserve showing various trails. An arrow points to a specific trail labeled 'Ishibashi Trail'. The bottom map is an aerial view of the same area with trails overlaid in different colors (purple, blue, orange, yellow). An arrow points to the 'Ishibashi Trail' on this map, which is highlighted in blue. The text below explains the changes to this trail.

- Trail redefined to help people stay on authorized trail
- Spur trails and bike jump closed

The Palos Verdes Peninsula Land Conservancy logo is located in the bottom left corner of the slide.

Plant Installation at Unauthorized Trail Closure at Ishibashi Trail



Plant Installation at Unauthorized Trail Closure at Ishibashi Trail (Site 4 on Map)



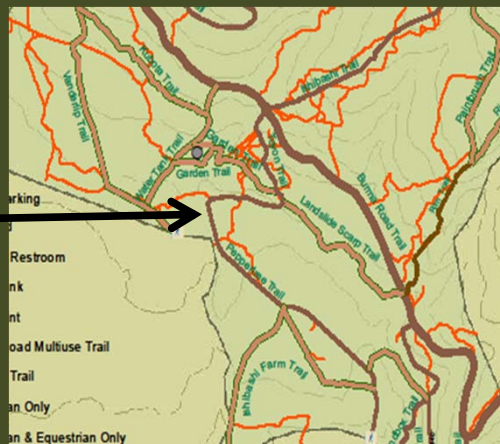
Trail crew closing Ishibashi jump





Garden/Peppertree trail

- High vandalism of posts and signage (cost)
- Increased enforcement decreased vandalism



Unauthorized trails at Portuguese Bend near Peppertree trail (in red)




Adopt a trail program





Plant Installation Unauthorized Trail Closure near Garden Trail



PLEASE STAY ON TRAIL
Habitat Restoration is Underway at this Preserve.



This Preserve provides nesting habitat for two rare birds, the coastal cactus wren and California gnatcatcher.



**AREA
CLOSED**

To Protect Wildlife
Habitat and Reduce
Soil Erosion

RPVMC section 12.16.090



Unauthorized Trail Management

First step:

- Area closed sign
- Break up trail, add brush

Second step:

- Add post and cable, more brush
- Install plants



Enforcement

- Rangers were contracted by the RPV to patrol the Preserve – Dec. 2009
- Increased patrol of the Preserve has led to a decrease in the misuse of trails and associated vandalism.



Volunteer Trail Watch

Goals

- As non-enforcement volunteers, will strive to increase compliance of people using the preserve through both the presence of the group and educational outreach
- Through the monitoring of the use of the preserve, establish specific data that will assist the existing Ranger group in prioritizing focus
- Encouraging a sense of public stewardship
- Provide public assistance, enhancing the public's experience and safety



Volunteer Trail Watch

- First orientation completed! 26 graduates
- Three 3-hour training workshops:
 - Orientation (PVPLC, ecology, VTW info)
 - Trail safety and responding to emergencies
 - Practicing Scenarios
- Optional additional training (in field)



