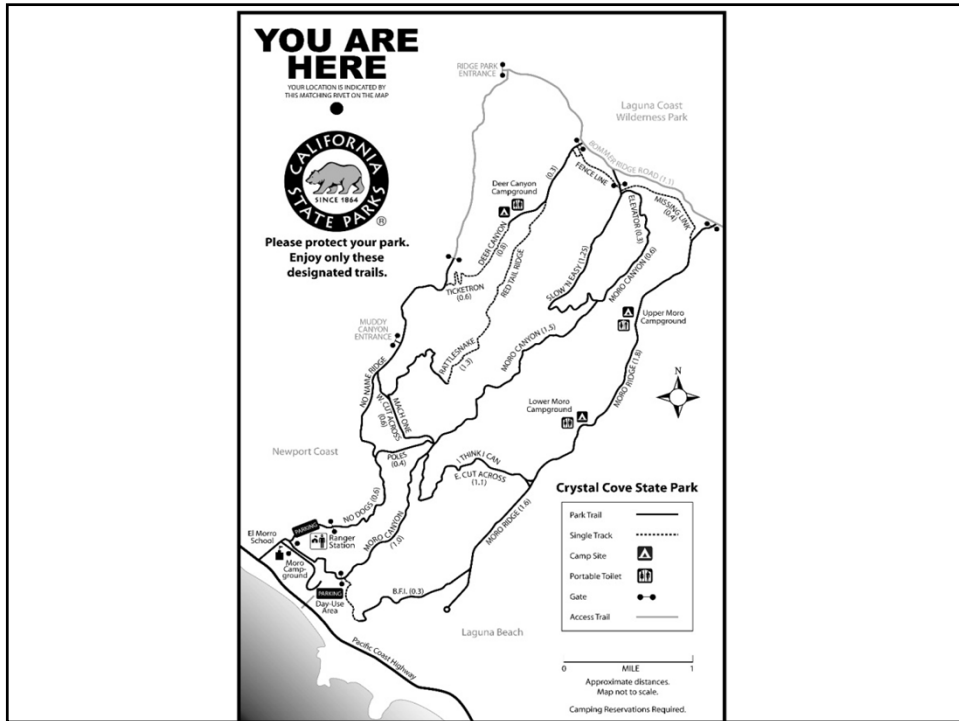
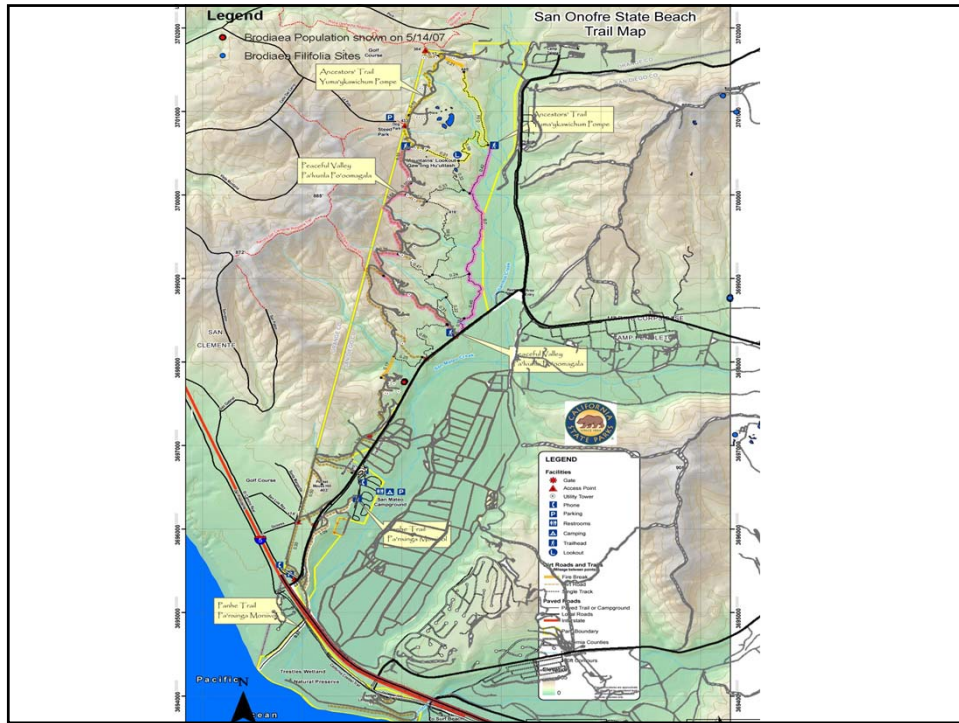




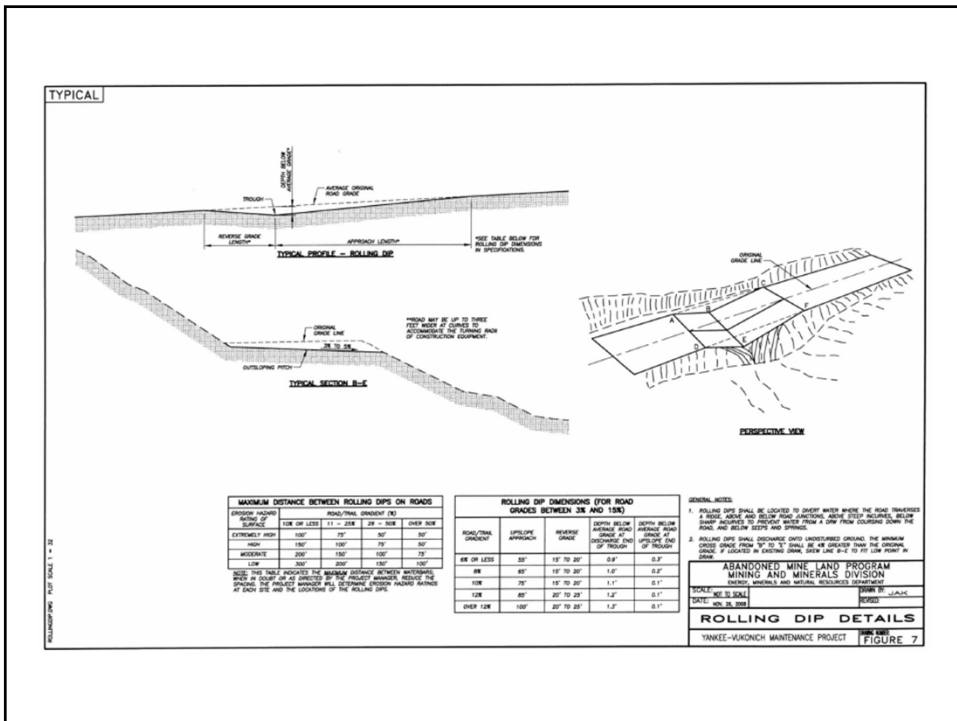
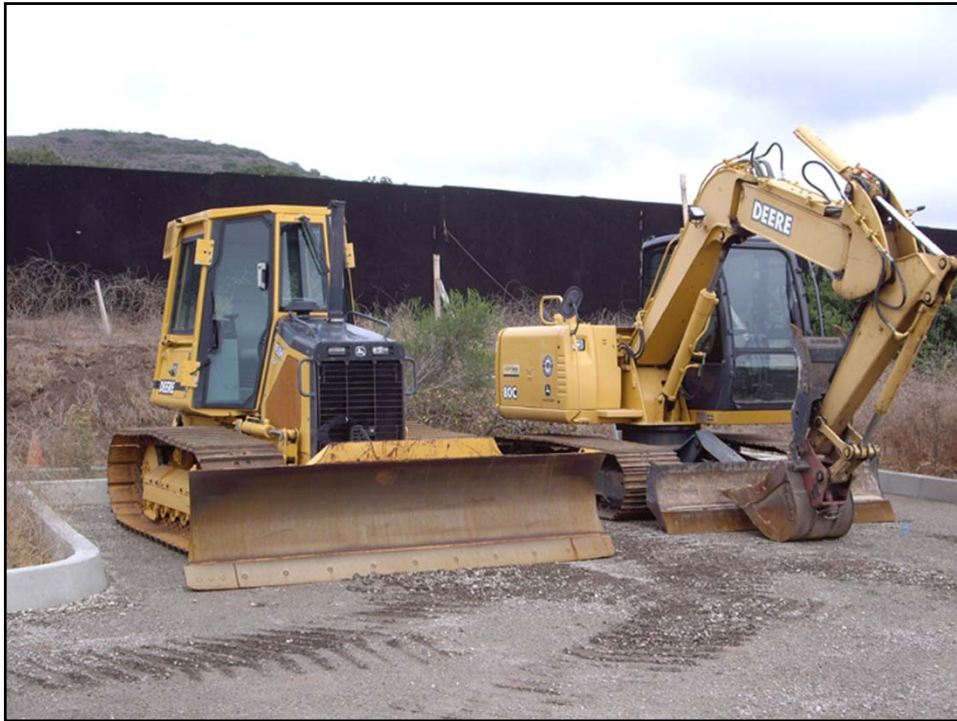
State Park Trails











www.crystalcovestatepark.com Volunteer Opportunity

CRYSTAL COVE STATE PARK PROJECT

RESTORATION AND REALIGNMENT OF THE TICKETRON TRAIL INCLUDING PUBLIC TRAIL MAP IMPROVEMENTS IN CRYSTAL COVE STATE PARK

The Ticketron trail, a steep trail of over 30% slope, has greatly widened over time. The project will realign and improve the trail for hikers, mountain bikers and equestrians by grade reduction, lengthening, and restoration. This will result in a safer, less steep alignment has been measured that minimizes the "take" of sage scrub habitat and improves public safety compared to existing conditions. Project will restore sensitive roughly 1/3 acre of coastal sage scrub habitat on the old trail. As part of the project, CCA will re-design, enhance, and produce CCSP overall trail map and CCSP route maps.



*In Cooperation with the
Crystal Cove Interpretive Association*



Managed by California State Parks



Grant funding provided by REI

DETAILS

- Project**
 - Four Public Events and over .33 acres habitat restored
 - 900 hours of volunteer time
 - Project Participant Demographics
- Partnership**
 - State of California Parks and Recreation
 - REI
 - Local non-profit organizations such as Laguna Canyon Foundation and Share Mountain Bike Club
- Desired Outcome**
 - Successful restoration of sensitive coastal sage scrub habitat
 - Sustainable and well built trail including correct trail hydrology
 - Increase utilization of recreational use of the Ticketron trail

TRAIL WORK EVENTS

- Saturday 10/24/2009
 - Build New Ticketron Trail
- Saturday 11/21/09 (11/28 rain out day)
 - Planting and continue with building Ticketron
- Saturday 12/12/09 (12/20 rain out day)
 - Planting and fine tune Ticketron
- Saturday 01/09/10 (01/16 rain out day)





Donate at www.crystalcovestatepark.com

Crystal Cove State Park

